



Kemp SPLA
(Service Provider
License Agreement)

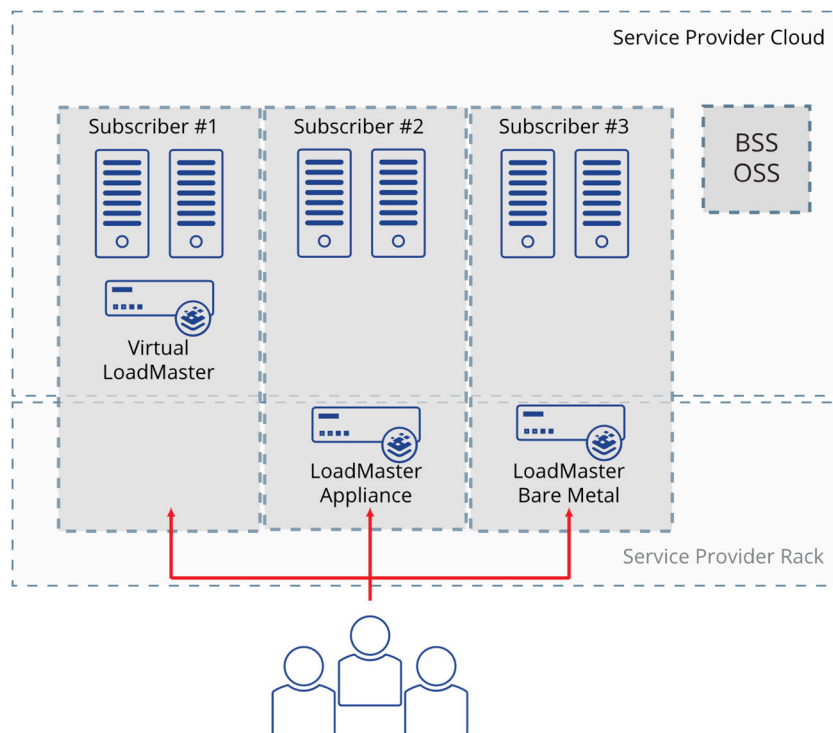
Solution Brief



Kemp's Service Provider Licensing Agreement (SPLA) program enables the creation of innovative services for subscribers of all sizes using the LoadMaster family of load balancers. With SPLA, service providers can enhance their service catalog with innovative products that drive ARPU and are profitable from day one. The program has no up-front commitment and has flexible licensing designed to support service provider business models including evaluation versions, downgrades and custom billing schedules. There are no contracts and no up-front charges, giving service providers a risk-free path to profitable value-added services.

Flexible Delivery Options

SPLA subscriptions are available on a number of platforms depending on the end-customer and service provider environments. Virtual appliances are available on all the major virtualization platforms and the Azure and AWS clouds. Virtual appliances offer the maximum flexibility to adjust licenses to match varying subscriber demands. SPLA subscriptions may also be delivered as a bare-metal solution where a dedicated hardware host is used to host load balancer services.



-
- **Load Balancing by Subscription**
 - **No up-front charges**
 - **No contracted commitment**
 - **Virtual, cloud and bare metal**
-

Consistent Experience

Kemp LoadMaster can scale to meet the requirements of any end-customer while maintaining profitability and offering a consistent experience for both the customer and the service provider. Features and functionality remain the same while performance capacity can be upgraded or downgraded in-situ via a simple license key change process. This consistency makes it easy for customers to not only scale as their business grows, but to also dynamically scale up and down around extreme events without having to change their application delivery environment and without any service provider provisioning or configuration change.

Designed to Integrate

The Kemp LoadMaster family of products provides native integration with orchestration and management frameworks including VMware vRealize and Hyper-V. Subscriber virtual appliances may be orchestrated and monitored via these standard toolsets with the capability to implement customized processes and controls via the RESTful API.

Service Portfolio Enhancement

Along with core load balancing capabilities, LoadMaster instances licensed under SPLA offer intrusion protection (IPS) and application edge security (ESP) with an option to further enhance services with a web application firewall (WAF) that includes daily rule updates, LoadMaster can also be used as the foundation for new products such as resilient hosted ADFS (Active Directory Federation Services), geographic load balancing (GSLB) and application protection services.

Tailored Solution

The Kemp SPLA program includes a dedicated support and account management team and offers a customized support package to match service provider requirements. Kemp also provides go-to-market assistance and on-site professional services and training to ensure successful and painless adoption. The default LoadMaster product set offered via SPLA ranges from 200Mbps through 10Gbps. Kemp have certified bare-metal deployments for Cisco UCS series, HP ProLiant DL series, Dell R Series, Oracle x86 and Fujitsu Primergy.

Capacity	Platform Virtual	Bare Metal	Features WAF	ESP	IPS
200Mbps	Y	N/A	Option	Y	Y
1Gbps	Y	Y	Option	Y	Y
2Gbps	Y	Y	Option	Y	Y
5Gbps	Y	Y	Option	Y	Y
10Gbps	Y	Y	Option	Y	Y
Geo Load Balancer	N/A	N/A	N/A	N/A	N/A

SPLA LoadMaster platforms and features