



# Kemp 360 Central for vSphere

## Installation Guide

UPDATED: 09 May 2019



## Copyright Notices

Copyright © 2002-2019 Kemp Technologies, Inc. All rights reserved. Kemp Technologies and the Kemp Technologies logo are registered trademarks of Kemp Technologies, Inc.

Kemp Technologies, Inc. reserves all ownership rights for the LoadMaster and Kemp 360 product line including software and documentation.

Used, under license, U.S. Patent Nos. 6,473,802, 6,374,300, 8,392,563, 8,103,770, 7,831,712, 7,606,912, 7,346,695, 7,287,084 and 6,970,933



# Table of Contents

---

<b>1 Introduction</b>	<b>4</b>
1.1 Document Purpose	4
1.2 Intended Audience	4
1.3 Check the Virtual Machine Settings	4
1.4 VMware Tools for Kemp 360 Central	4
<b>2 Installing Kemp 360 Central using vSphere</b>	<b>6</b>
2.1 Download the OVF File	6
2.2 Deploy the OVF File	6
2.3 Check the Network Adapter Settings	12
2.4 Power on the Kemp 360 Central Instance	14
<b>3 Manually Set the Network Settings</b>	<b>17</b>
<b>References</b>	<b>20</b>
<b>Last Updated Date</b>	<b>21</b>

# 1 Introduction

Kemp 360 Central is a centralized management, orchestration, and monitoring application that enables the administration of deployed LoadMaster instances.

Use Kemp 360 Central to perform administrative tasks on each LoadMaster instance. This provides ease of administration because multiple LoadMasters can be administered in one place, rather than accessing each LoadMaster individually.

## 1.1 Document Purpose

The purpose of this document is to provide step-by-step instructions on deploying Kemp 360 Central with VMware vSphere.

## 1.2 Intended Audience

This document is intended for anyone who needs more information about deploying Kemp 360 Central with VMware vSphere.

## 1.3 Check the Virtual Machine Settings

Note that since Version 1.25.2, the default minimum Virtual Machine provisioning requirements for new installs have been updated as follows:

Resource	V1.24 and earlier firmware	V1.25.2 and later firmware
CPU	Two cores	Four cores
RAM	4 GB	8 GB
Disk Storage	40 GB	250 GB

Upgrades to Version 1.25.2 and later releases will not update existing Virtual Machine resources. To modify your current Virtual Machine configuration to conform to the above minimum values, contact Kemp Support.

## 1.4 VMware Tools for Kemp 360 Central

Kemp 360 Central is delivered with VMware Tools version 10.2.5.3619 pre-installed. This is a Kemp-approved software package provided on installation of, or upgrade to, Kemp 360 Central version



2.2 and above. Currently, there is no management interface for the VMware Tools package, which can only be modified by using an updated image of Kemp 360 Central software.

# 2 Installing Kemp 360 Central using vSphere

The following instructions describe how to install Kemp 360 Central using the VMware vSphere client.

## 2.1 Download the OVF File

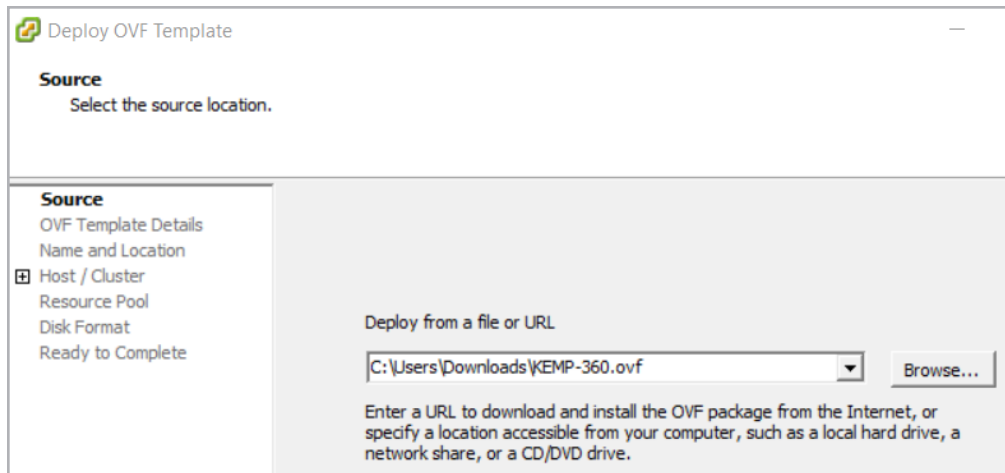
Kemp 360 Central is packaged with an .ovf file for ease of deployment. This file can be freely downloaded from Kemp and by default offers a permanent two device license. To download the OVF file please follow the following instructions:

1. Visit the download page at <http://kemptechnologies.com/kemp360-central-download/>
2. Select your country from the drop down list.
3. Select VMware as the hypervisor platform.
4. Click **Download** to start the download.
5. Checksums are provided to allow integrity checking of the download.
6. If necessary, unzip the download to an accessible location.

## 2.2 Deploy the OVF File

To deploy the Kemp 360 Central instance, initiate a **Deploy OVF Template** wizard which gathers all the information required to correctly deploy the Kemp 360 Central instance.

1. Open the VMware vSphere client.
2. Select the correct Resource Pool within which you wish to install the Kemp 360 Central instance.
3. Select the **File > Deploy OVF Template** menu option, this initiates the **Deploy OVF Template** wizard.



**Deploy OVF Template**

**Source**  
Select the source location.

**Source**

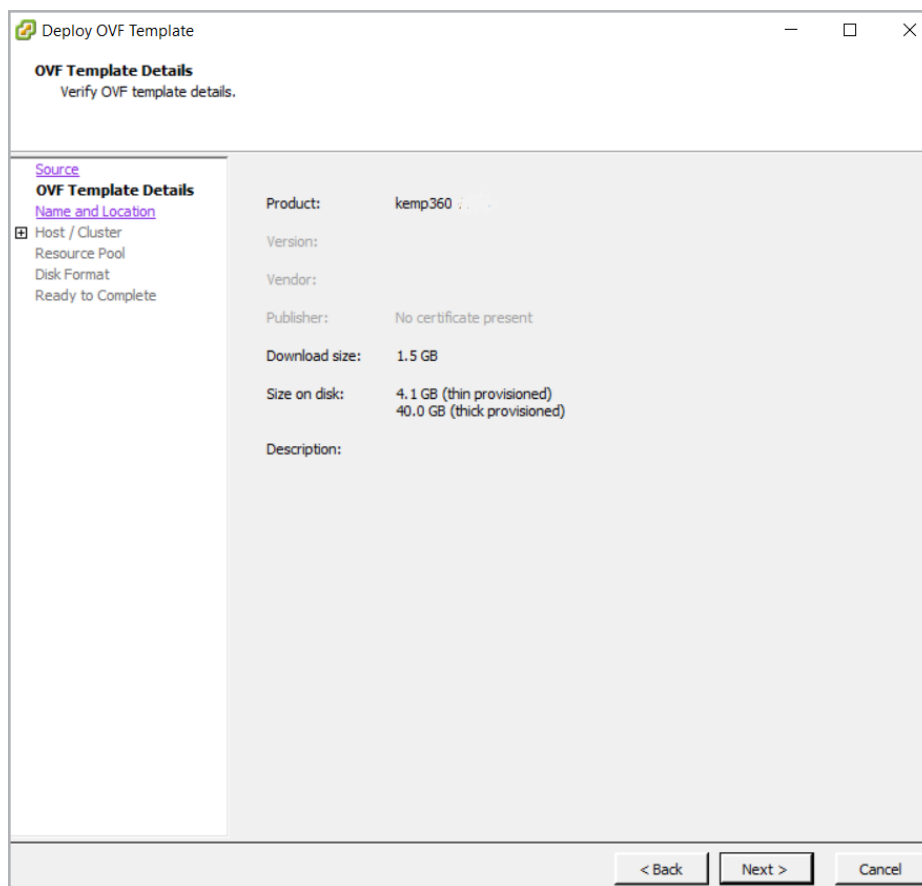
- OVF Template Details
- Name and Location
- Host / Cluster**
- Resource Pool
- Disk Format
- Ready to Complete

Deploy from a file or URL

C:\Users\Downloads\KEMP-360.ovf **Browse...**

Enter a URL to download and install the OVF package from the Internet, or specify a location accessible from your computer, such as a local hard drive, a network share, or a CD/DVD drive.

4. Within the **Source** screen, click the **Browse** button and select the downloaded file.
5. Click the **Next** button.



**Deploy OVF Template**

**OVF Template Details**  
Verify OVF template details.

[Source](#)

**OVF Template Details**

- [Name and Location](#)
- Host / Cluster**
- Resource Pool
- Disk Format
- Ready to Complete

Product: kemp360 : 1.0.0

Version:

Vendor:

Publisher: No certificate present

Download size: 1.5 GB

Size on disk: 4.1 GB (thin provisioned)  
40.0 GB (thick provisioned)

Description:

< Back **Next >** Cancel

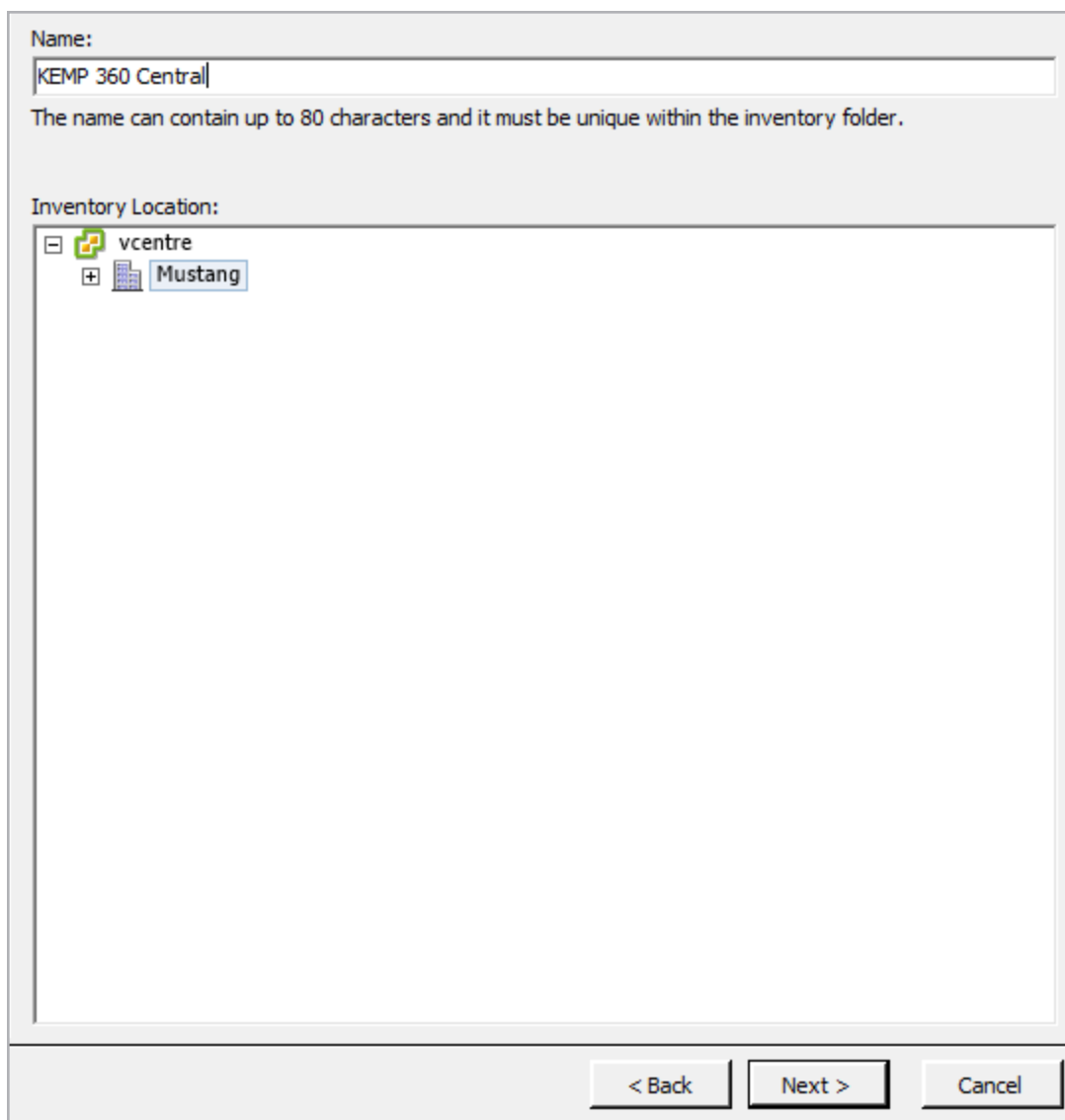
6. Within the **OVF Template Details** screen, ensure that all the details regarding the Kemp 360 Central instance are correct.

---

The estimated disk usage is approximately 40 GB.

---

7. Click the **Next** button.



Name:

KEMP 360 Central

The name can contain up to 80 characters and it must be unique within the inventory folder.

Inventory Location:

vcentre

Mustang

< Back   Next >   Cancel

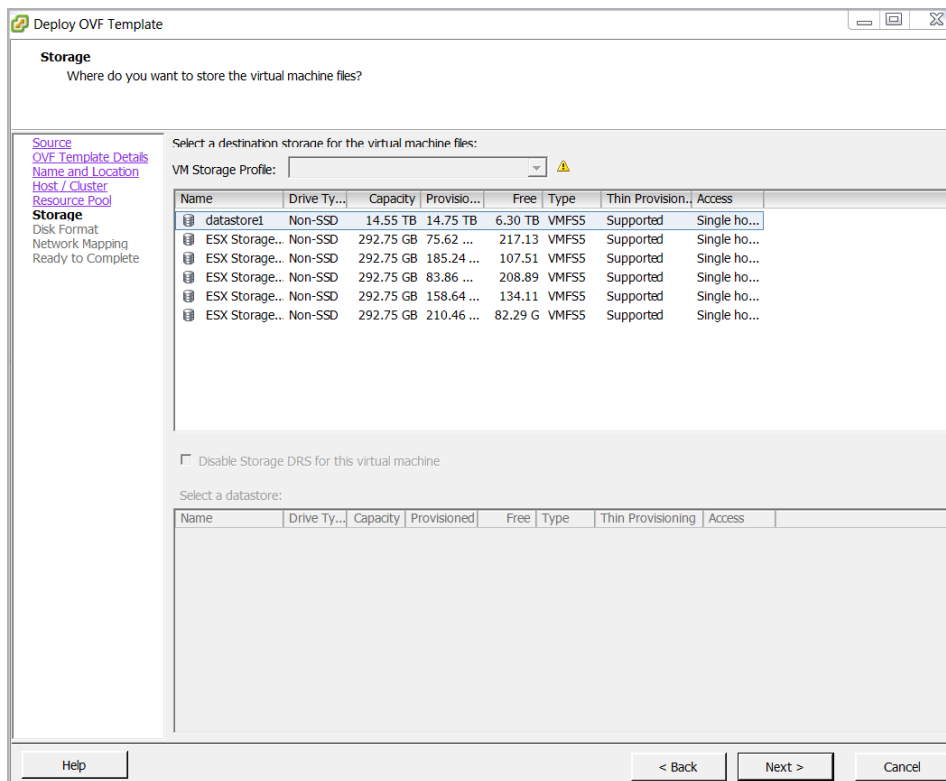
8. In the **Name and Location** screen, enter a name for the Kemp 360 Central instance into the Name field.  
The name can be up to 80 characters long. It should be unique within the virtual machine folder. Names are case sensitive.



9. If required, select the folder location within the inventory where Kemp 360 Central will reside.
10. Click the **Next** button.
11. Within the **Resource Pool** screen, select the resource pool where Kemp 360 Central will run.


This page only displays if the cluster contains a resource pool and if you have not selected a resource pool within the inventory tree before initiating the deployment wizard.

12. Click the **Next** button.



**Storage**  
Where do you want to store the virtual machine files?

Select a destination storage for the virtual machine files:

VM Storage Profile:   

Name	Drive Ty...	Capacity	Provisio...	Free	Type	Thin Provision...	Access
datastore1	Non-SSD	14.55 TB	14.75 TB	6.30 TB	VMFS5	Supported	Single ho...
ESX Storage...	Non-SSD	292.75 GB	75.62 ...	217.13	VMFS5	Supported	Single ho...
ESX Storage...	Non-SSD	292.75 GB	185.24 ...	107.51	VMFS5	Supported	Single ho...
ESX Storage...	Non-SSD	292.75 GB	83.86 ...	208.89	VMFS5	Supported	Single ho...
ESX Storage...	Non-SSD	292.75 GB	158.64 ...	134.11	VMFS5	Supported	Single ho...
ESX Storage...	Non-SSD	292.75 GB	210.46 ...	82.29 G	VMFS5	Supported	Single ho...

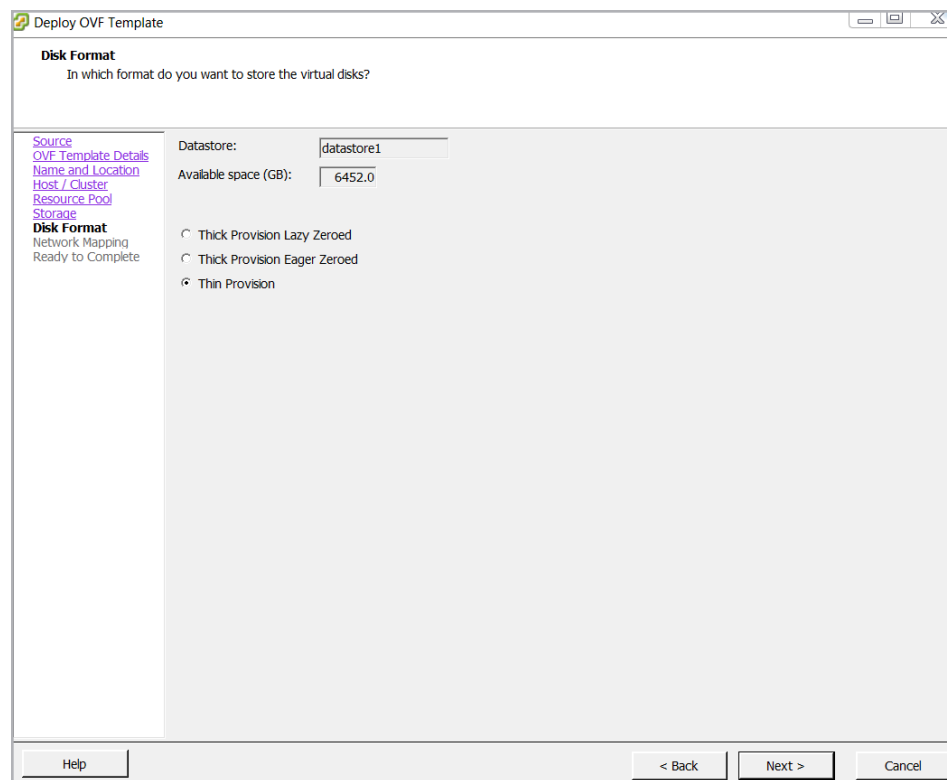
☐ Disable Storage DRS for this virtual machine

Select a datastore:

Name	Drive Ty...	Capacity	Provisioned	Free	Type	Thin Provisioning	Access
------	-------------	----------	-------------	------	------	-------------------	--------

Help      < Back      Next >      Cancel

13. Within the **Storage** screen, select the datastore in which you wish to store the VLM.  
You may only select from preconfigured datastores within this screen.
14. Click the **Next** button.



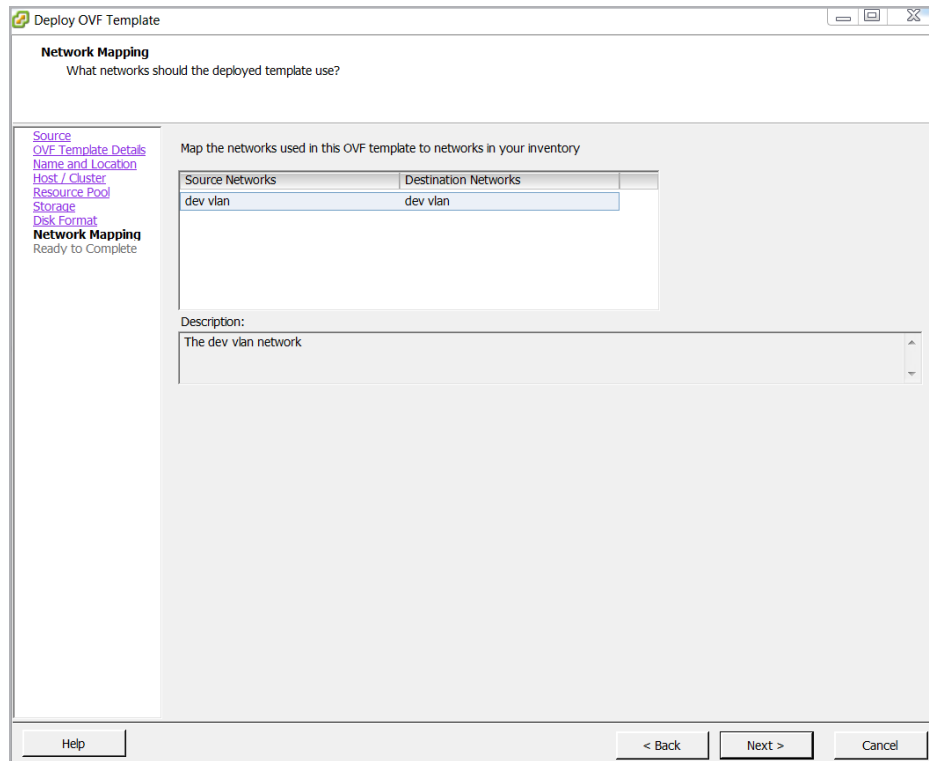
15. Within the **Disk Format** screen, select whether you wish to use **Thick Provision Lazy Zeroed**, **Thick Provision Eager Zeroed** or **Thin Provision**.

---

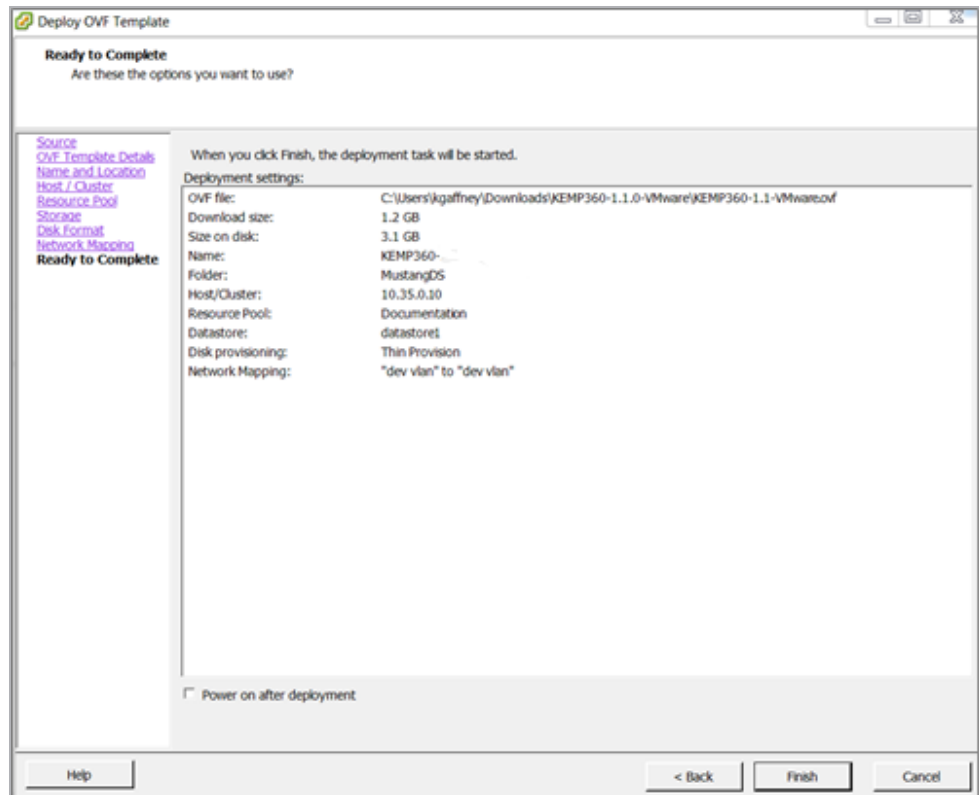
Kemp recommends using the **Thin Provision** option.

---

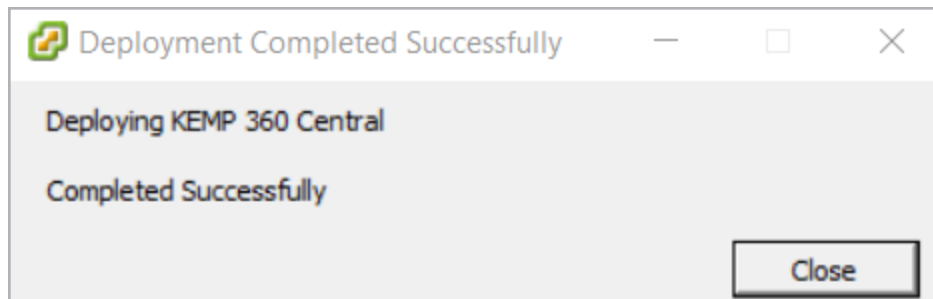
16. Click the **Next** button.



17. Within the **Network Mapping** screen, select which networks in the inventory should be used for Kemp 360 Central.
18. Select the network mapping for **Network** and **Farm** by choosing the relevant preconfigured network from the **Destination Network** drop-down list.
19. Click the **Next** button.



20. Within the **Ready to Complete** screen, ensure that all the details are correct.
21. Click the **Finish** button.



Once the **Finish** button is clicked, the Kemp 360 Central machine is deployed.

## 2.3 Check the Network Adapter Settings

Before starting Kemp 360 Central first verify the network adapters are configured correctly.

1. Select the deployed Kemp 360 Central instance within the inventory tree.
2. Select the **Inventory > Virtual Machine > Edit Settings** menu option.

3. Select **Network adapter** from the Hardware tree.
4. Ensure the network adapters are configured correctly as follows:
  - a. Ensure the **Connect at power on** checkbox is selected.
  - b. Ensure the **Adapter Type** is correct.

---

The default, recommended adapter type is E1000.

---

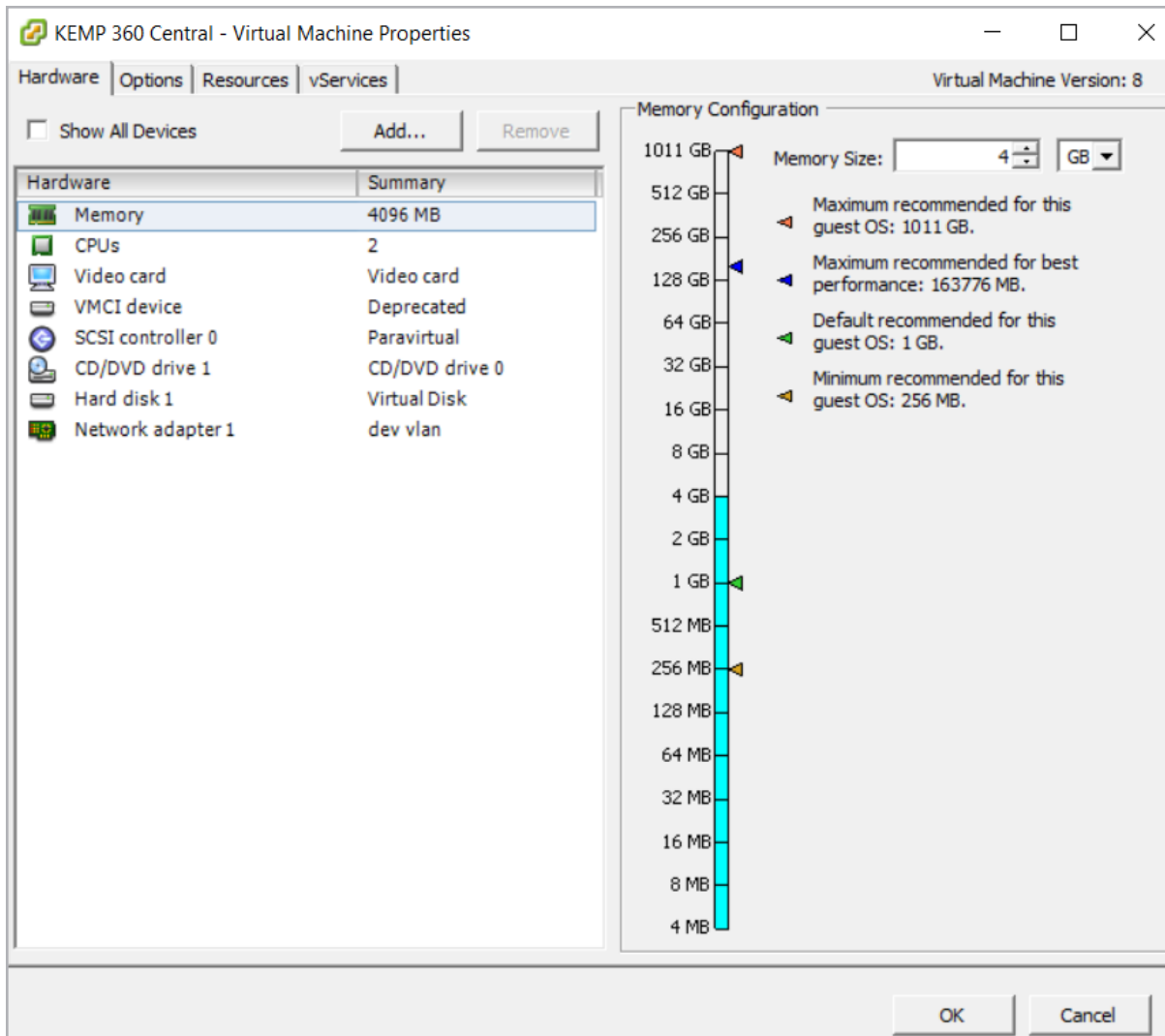
---

Kemp also supports the vmxnet3 driver.

---

Both E1000 and vmxnet3 support Jumbo frames.

- c. Ensure that the **Automatic** option is selected within the **MAC Address** section.
- d. Ensure that the correct **Network Label** is selected.



If the network adapters are not configured correctly or if they have not been set up, you can add a new network adapter by clicking the **Add** button.

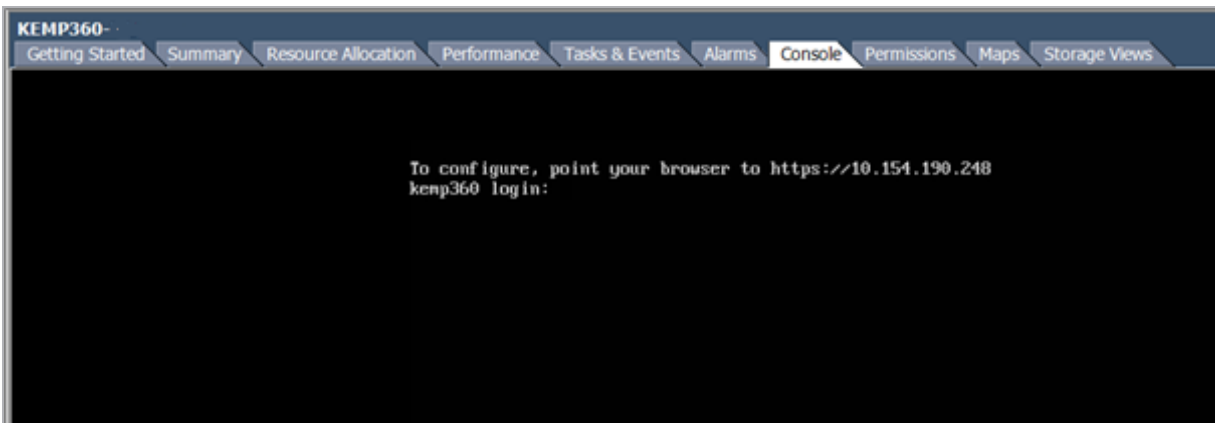
## 2.4 Power on the Kemp 360 Central Instance

To power on the Kemp 360 Central instance, follow the steps below:

1. In the left panel of the client, select the Kemp 360 Central instance.



2. Click the **Power on the virtual machine** link.
3. Select the **Console** tab and wait for the instance to finish booting.



4. When the Kemp 360 Central instance finishes booting, a screen similar to the one above appears showing the IP address. Take note of this as you will need it to access the Kemp 360 Central User Interface (UI).
5. If Kemp 360 Central does not obtain an IP address, or if the IP address needs to be changed, it can be manually configured in the console by following the steps in the **Manually Set the Network Settings** section.



Now that the instance is deployed, Kemp 360 Central must be configured. For more information on this, including instructions on how to license Kemp 360 Central, refer to the **Kemp 360 Central Feature Description** on the [Kemp Documentation page](#).



# 3 Manually Set the Network Settings

This section shows you how to manually configure the Kemp 360 Central network settings, without using DHCP.

Quick setup automatically begins when you log into Kemp 360 Central for the first time. It can also be started by selecting option one from the main menu.

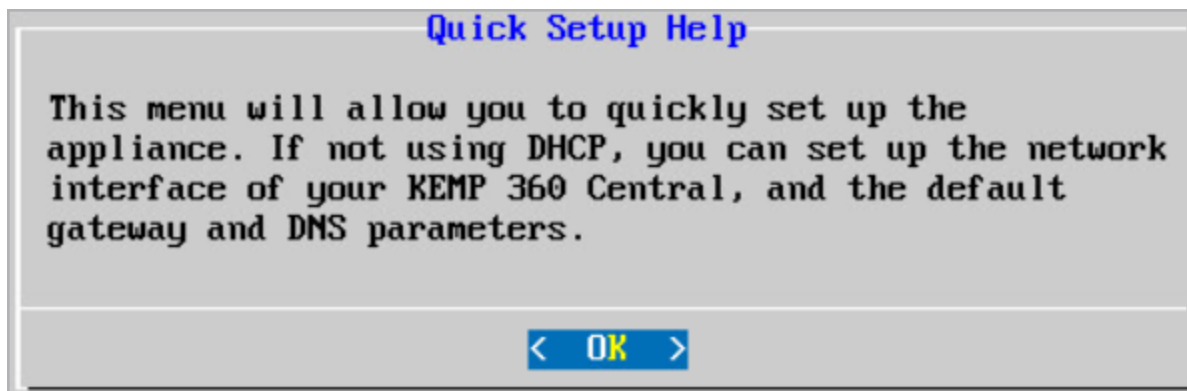
---

The default username and password are **kemp360** and **1fourall**, respectively.

---

Quick setup allows the network settings for Kemp 360 Central to be quickly configured. Once Kemp 360 Central is configured and running, all other parameters can be changed using the User Interface (UI).

Quick Setup welcomes you with the following message:



The Quick Setup procedure allows the configuration of the following parameters:

1. IP address of Kemp 360 Central
2. Default Gateway
3. IP address or addresses of any associated name servers

After these parameters have been set, the configuration should be activated. Kemp 360 Central is then ready for use.

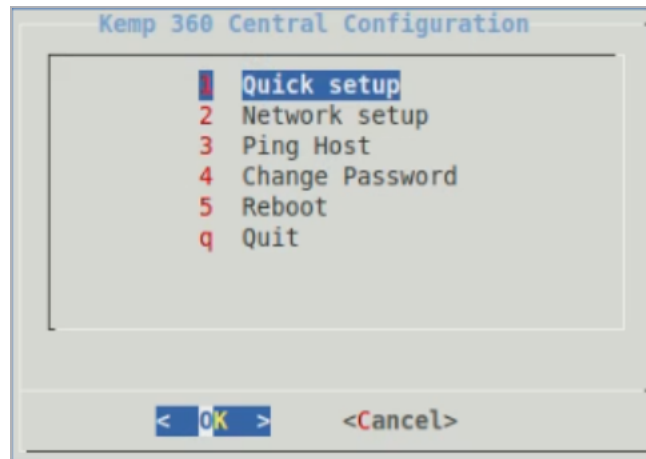
---

If a parameter has been incorrectly set. Use the **Cancel** button until the main menu appears. Quick Setup can then be performed again to correct the error.

---

To quickly set up your Kemp 360 Central, use the following steps:

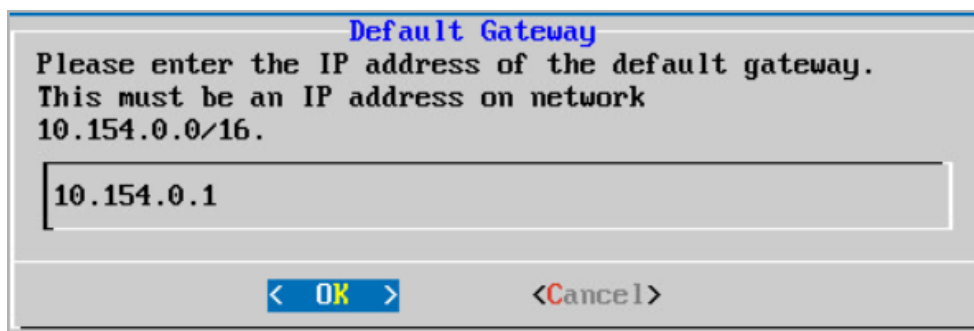
1. Log in to the console.



2. From the menu which displays, select Quick Setup and then press **OK**.
3. From the **Quick Setup Help** dialog box, press **OK**.
4. On the **DHCP** dialog box, select **No** to not use DHCP.



- Enter the IP address and Classless Inter-Domain Routing (CIDR) you wish to assign to Kemp 360 Central and press OK.




**Default Gateway**

Please enter the IP address of the default gateway.  
This must be an IP address on network  
10.154.0.0/16.

10.154.0.1

< OK >      <Cancel>

5. Enter the IP address of the default gateway and press OK.

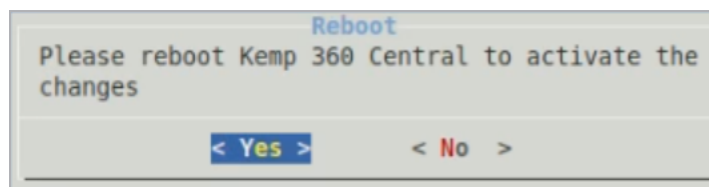


**Name Server IP Addresses**

Please enter a space separated list of nameserver IP addresses

< OK >      <Cancel>

6. Enter a, space-separated, list of name server IP addresses and press OK.



**Reboot**

Please reboot Kemp 360 Central to activate the  
changes

< Yes >      < No >

7. Press **Yes** on the **Reboot** screen, to activate the setup.

More information on Console Administration for Kemp 360 Central can be found in the **Kemp 360 Central Console Administration, Interface Description**.

# References

Unless otherwise specified, the below documents can be found at

<http://kemptechnologies.com/documentation>

**Kemp 360 Central, Feature Description**

**Kemp 360 Central Console Administration, Interface Description**

# Last Updated Date

This document was last updated on 09 May 2019.