

Pooled Licensing Solution Brief

SOLUTION BRIEF

Flexible Licensing

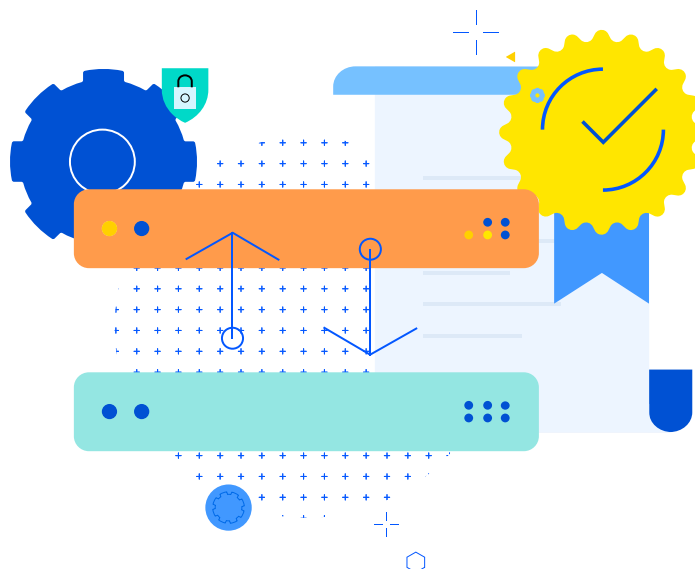
Pooled Licensing from Progress Kemp LoadMaster simplifies the challenge of managing the license lifecycle with a cost effective and flexible approach to enabling load balancing capacity where and when needed.

When coupled with Progress LoadMaster automation capabilities, pooled licensing provides the ability to scale application delivery on demand to meet business requirements.

How it works

Progress LoadMaster 360 acts as the licensing manager for pooled licensing and can issue individual LoadMaster licenses based on the required capacity. Issued licenses deplete the pool but can be recovered and added back into the pool at any time for re-issue.

This provides the flexibility to issue licenses on demand for different use cases, ranging from short-term projects, such as testing, to long-term licenses for customers or departments in the organization.



Addressing the Licensing Challenges

Today's application and service delivery environments are complex and dynamic and require a flexible and easily managed approach to providing the right capacity when required.

Challenge	The Pooled Licensing Solution
I want flexibility to deliver capacity when and where needed	Pooled licenses are on-demand so you can deploy a new instance or re-license an existing instance without any procurement processes.
I want to upgrade or switch plans when required	Our flexible licensing allows you to move between plans and upgrade seamlessly when needed.
I need to be able to scale on demand	Our automation capabilities and APIs support deployment and licensing using toolsets such as Ansible allowing automated scaling of services to meet changing demands.
I use both cloud and on-premises platforms	Pooled licenses can be issued to any LoadMaster on any supported cloud or on-premises hypervisor allowing a single pool to deliver capacity across hybrid environments.
I want to cost-effectively add a security layer to all applications	Web Application Firewall functionality is available for specific Pooled Subscription tiers and it can be distributed and managed through LoadMaster 360.
I want to be able to control how much bandwidth is used by an application	Licenses can be issued from the pool to either have multiple applications per LoadMaster or distribute specific applications to their own LoadMasters. Doing this allows specific control on bandwidth allocation.



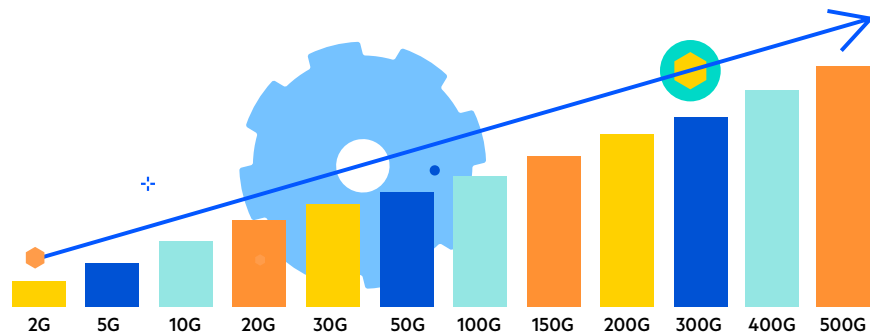
Pooled Licensing Features

The LoadMaster family of products provides native integration with orchestration and management frameworks including VMware vRealize and Hyper-V. Subscriber virtual appliances may be orchestrated and monitored via these standard toolsets with the capability to implement customized processes and controls via the RESTful API.

Feature	Benefit
Annual subscription	Reduced up-front investment and flexibility to grow as demands change
License Flexibility	Optimize use of license pool by avoiding over or under-provisioning
24x7 Support	Access the skills and resources of the LoadMaster team whenever needed
Cross Platform	Use the same license for all load balancing instances regardless of deployment location (e.g. public cloud, private cloud, hybrid cloud)
Web Application Firewall	Provide application level security to all applications regardless of size with daily rule updates for ongoing protection
Edge Security Pack	Access to flexible authentication options, Single Sign-on, Custom Log in Forms, and LDAP, SAML features
Global Server Load Balancing	GEO is deployed in an Active-Active configuration to provide high availability, site-to-site resiliency and optimal user experience across multiple geographically distant endpoints.
LoadMaster 360 Benefit	Observability and insights into the performance, health and security of applications and delivery infrastructure.
Enhanced Web Application Firewall (WAF)	Available with LoadMaster 360, delivers improved security insights and minimizes the time required for WAF configuration and tuning.

Pooled Licensing Subscriptions

Subscriptions are annual and billed annually. Subscriptions include 24x7 support, Identity and Access (ESP), Web Application Firewall (WAF) and Global Server Load Balancing.



Pooled Model Matrix

Plan/Models	Included Applications	Max Loadmasters	Total Max Throughput	VLM-500 (Tiny)	VLM-1000 (Small)	VLM-5000 (Large)	VLM-10000 (X-Large)
Pooled-2G	10	4	2 Gb/s	✓	✓	–	–
Pooled-5G	10	10	5 Gb/s	✓	✓	–	–
Pooled-10G	20	20	10 Gb/s	✓	✓	✓	–
Pooled-20G	30	20	20 Gb/s	✓	✓	✓	✓
Pooled-30G	30	30	30 Gb/s	✓	✓	✓	✓
Pooled-50G	50	50	50 Gb/s	✓	✓	✓	✓
Pooled-100G	100	100	100 Gb/s	✓	✓	✓	✓
Pooled-150G	100	150	150 Gb/s	✓	✓	✓	✓
Pooled-200G	100	200	200 Gb/s	✓	✓	✓	✓
Pooled-300G	100	300	300 Gb/s	✓	✓	✓	✓
Pooled-400G	100	400	400 Gb/s	✓	✓	✓	✓
Pooled-500G	100	500	500 Gb/s	✓	✓	✓	✓



Try Kemp LoadMaster Free for 30 Days!
Visit www.kemptechnologies.com

About Progress Software

[Progress Software](#) (Nasdaq: PRGS) empowers organizations to achieve transformational success in the face of disruptive change. Our software enables our customers to develop, deploy and manage responsible AI-powered applications and personalized digital experiences with agility and ease. Businesses of all sizes get a trusted provider in Progress, with the products, expertise and vision they need to turn AI disruption into a competitive advantage. Millions of developers and technologists at hundreds of thousands of organizations depend on Progress every day. Learn more at www.progress.com

© 2026 Progress Software Corporation and/or its subsidiaries or affiliates.
All rights reserved. Rev 2026/01 | RITM0341717

[f](#) /progresssw
[t](#) /progresssw
[v](#) /progresssw
[in](#) /progress-software
[o](#) /progress_sw_